

Product Description

CTCF(R339W)

Catalog Number: 26326

Gene Symbol: CTCF; MRD21

Description: Anti-CTCF(R339W) Mouse Monoclonal Antibody

Background: Transcriptional repressor CTCF also known as 11-zinc finger protein or CCCTC-binding factor is a transcription factor that in humans is encoded by CTCF gene. CTCF is involved in many cellular processes, including transcriptional regulation, insulator activity, recombination, and regulation of chromatin architecture.

Immunogen: A synthetic peptide from the internal region of CTCF, which includes the mutation of R339W, human origin.

Tested Applications: ELISA, WB, IF, IHC

Recommended Dilutions:

ELISA:	1:1000-1:5000
WB:	1:500-1:2000
IF:	1:50-1:100
IHC:	1:50-1:100

Concentration: 1 mg/ml

Host: Mouse

Clonality: Monoclonal

Isotype: IgG

Purity: Purified from ascites

Format: Liquid

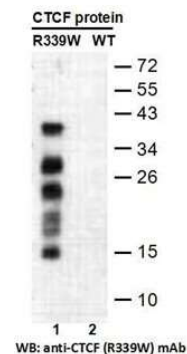
Preservative: No

Constituents: PBS (without Mg²⁺ and Ca²⁺), pH7.4, 150 mM NaCl, 50% glycerol

Species Reactivity: Recognizes CTCF(R339W), but not wild type CTCF protein from vertebrates.

Storage Conditions: Store at -20°C. Avoid repeated freezing and thawing

Western blot:

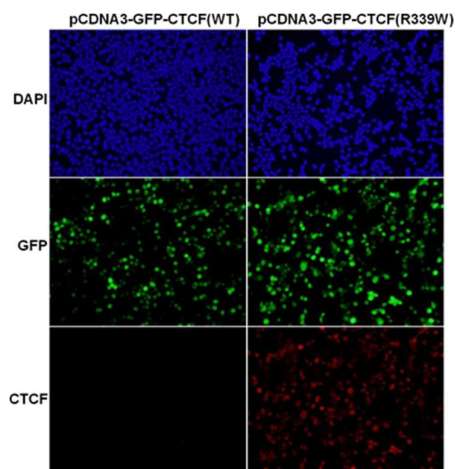


Western blot analysis of recombinant CTCF(R339W) and wild type proteins.

Purified His-tagged CTCF(R339W) protein (lane 1) and corresponding wild-type protein (lane 2) were blotted with anti-CTCF(R339W) monoclonal antibody (Cat. # 26326).

FOR RESEARCH USE ONLY. NOT FOR DIAGNOSTIC APPLICATIONS

Immunofluorescence:



Immunofluorescence of cells expressing CTCF proteins with anti-CTCF (R339W) antibody.

HEK293T cells were transfected with pCDNA3-GFP-CTCF (WT) plasmid (left column) or pCDNA3-GFP-CTCF (R339W) plasmid (right column), then fixed and stained with anti-CTCF (R339W) monoclonal antibody (Cat. # 26326).

FOR RESEARCH USE ONLY. NOT FOR DIAGNOSTIC APPLICATIONS